



PRODUCT INFORMATION

CHECK VALVES

19 SERIES




ROSS CONTROLS

Check Valves


Heavy-Duty 19 Series

Low-Profile Check Valves

Port Size	Valve Model Number		C _v	Weight lb (kg)	
	NPT Threads	G Threads			
1/8	1968D1005	D1968D1005	0.5	0.5 (0.2)	
1/4	1968D2005	D1968D2005	0.5	0.5 (0.2)	

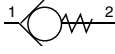


Mid-Range Check Valves

Port Size	Valve Model Number		C _v	Weight lb (kg)	
	NPT Threads	G Threads			
1/4	1968D2001	D1968D2001	2.9	0.5 (0.2)	
3/8	1968D3001	D1968D3001	3.7	0.5 (0.2)	
1/2	1968D4001	D1968D4001	3.9	0.5 (0.2)	



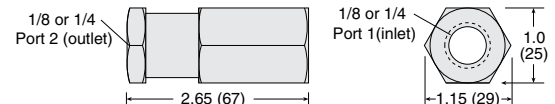
High-Capacity Check Valves

Port Size	Body Size	Valve Model Number		C _v	Weight lb (kg)	
		NPT Threads	G Threads			
1/2	3/4	1968A4107	D1968A4107	5.2	0.9 (0.4)	
3/4	3/4	1968A5107	D1968A5107	8.6	0.9 (0.4)	
1	3/4	1968A6117	D1968A6117	8.3	0.9 (0.4)	
1	1 1/4	1968A6107	D1968A6107	17	2.0 (0.9)	
1 1/4	1 1/4	1968A7107	D1968A7107	22	2.0 (0.9)	
1 1/2	1 1/4	1968A8117	D1968A8117	22	2.0 (0.9)	
1 1/2	2	1968A8107	D1968A8107	50	4.7 (2.1)	
2	2	1968A9107	D1968A9107	50	4.7 (2.1)	
2 1/2	2	1968A9117	D1968A9117	50	4.7 (2.1)	

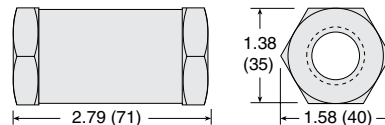


Valve Dimensions – inches (mm)

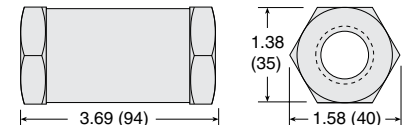
Low-Profile Check Valves



Port Size 1/4 and 3/8

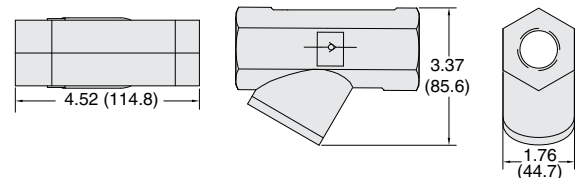


Port Size 1/2



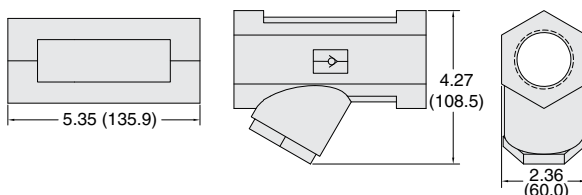
Mid-Range Check Valves

Body Size 3/4

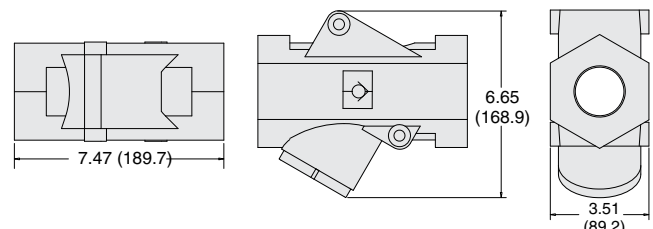


High-Capacity Check Valves

Body Size 1 1/4



Body Size 2



STANDARD SPECIFICATIONS (for valves on this page):

Construction Design	Poppet	Flow Media	Filtered air
Mounting Type	In-line	Operating Pressure	5 to 150 psig (0.3 to 10 bar)
Temperature	Ambient/Media: -40° to 175°F (-40° to 80°C)	Construction Material	Valve Body: Cast Aluminum
	For temperatures below 40°F (4°C) air must be free of water vapor to prevent formation of ice. For temperatures below -40°F (-40°C), consult ROSS.		

IMPORTANT NOTE: Please read carefully and thoroughly all of the **CAUTIONS, WARNINGS** on the inside back cover.

CAUTIONS, WARNINGS And STANDARD WARRANTY

ROSS OPERATING VALVE, ROSS CONTROLS®, ROSS DECCO®, and AUTOMATIC VALVE INDUSTRIAL, collectively the "ROSS Group".

PRE-INSTALLATION or SERVICE

1. Before servicing a valve or other pneumatic component, be sure all sources of energy are turned off, the entire pneumatic system is shut down and exhausted, and all power sources are locked out (ref: OSHA 1910.147, EN 1037).
2. All ROSS Group Products, including service kits and parts, should be installed and/or serviced only by persons having training and experience with pneumatic equipment. Because any product can be tampered with and/or need servicing after installation, persons responsible for the safety of others or the care of equipment must check ROSS Group Products on a regular basis and perform all necessary maintenance to ensure safe operating conditions.
3. All applicable instructions should be read and complied with before using any fluid power system to prevent harm to persons or equipment. In addition, overhauled or serviced valves must be functionally tested prior to installation and use. If you have any questions, call your nearest ROSS Group location.
4. Each ROSS Group Product should be used within its specification limits. In addition, use only ROSS Group components to repair ROSS Group Products.

WARNINGS: *Failure to follow these instructions can result in personal injury and/or property damage.*

FILTRATION and LUBRICATION

1. Dirt, scale, moisture, etc., are present in virtually every air system. Although some valves are more tolerant of these contaminants than others, best performance will be realized if a filter is installed to clean the air supply, thus preventing contaminants from interfering with the proper performance of the equipment. The ROSS Group recommends a filter with a 5-micron rating for normal applications.
2. All standard ROSS Group filters and lubricators with polycarbonate plastic bowls are designed for compressed air applications only. Use the metal bowl guard, where provided, to minimize danger from high pressure fragmentation in the event of bowl failure. Do not expose these products to certain fluids, such as alcohol or liquefied petroleum gas, as they can cause bowls to rupture, creating a combustible condition and hazardous leakage. Immediately replace crazed, cracked, or deteriorated bowls.
3. Only use lubricants which are compatible with materials used in the valves and other components in the system. Normally, compatible lubricants are petroleum base oils with oxidation inhibitors, an aniline

point between 180°F (82°C) and 220°F (104°C), and an ISO 32, or lighter, viscosity. Avoid oils with phosphate type additives which can harm polyurethane components, potentially leading to valve failure which risks personal injury, and/or damage to property.

WARNINGS: *Failure to follow these instructions can result in personal injury and/or property damage.*

AVOID INTAKE/EXHAUST RESTRICTION

1. Do not restrict air flow in the supply line. To do so could reduce the pressure of the supply air below minimum requirements for the valve and thereby causing erratic action.
2. Do not restrict a valve's exhaust port as this can adversely affect its operation. Exhaust silencers must be resistant to clogging and must have flow capacities at least as great as the exhaust capacities of the valves. Contamination of the silencer can result in reduced flow and increased back pressure.

WARNINGS: *Failure to follow these instructions can result in personal injury and/or property damage.*

SAFETY APPLICATIONS

1. Mechanical Power Presses and other potentially hazardous machinery using a pneumatically controlled clutch and brake mechanism must use a press control double valve with a monitoring device. A double valve without a self-contained monitoring device should be used only in conjunction with a control system which assures monitoring of the valve. All double valve installations involving hazardous applications should incorporate a monitoring system which inhibits further operation of the valve and machine in the event of a failure within the valve mechanism.
2. Safety exhaust (dump) valves without a self-contained monitoring device should be used only in conjunction with a control system which assures monitoring of the valve. All safety exhaust valve installations should incorporate a monitoring system which inhibits further operation of the valve and machine in the event of a failure within the valve mechanism.
3. Per specifications and regulations, the ROSS L-O-X® and L-O-X® with EEZ-ON®, N06 and N16 Series operation products are defined as energy isolation devices, NOT AS EMERGENCY STOP DEVICES.

WARNINGS: *Failure to follow these instructions can result in personal injury and/or property damage.*

STANDARD WARRANTY

All products sold by the ROSS Group are warranted for a one-year period [with the exception of Filters, Regulators and Lubricators ("FRLs") which are warranted for a period of seven (7) years] from the date of purchase. All products are, during their respective warranty periods, warranted to be free of defects in material and workmanship. The ROSS Group's obligation under this warranty is limited to repair, replacement or refund of the purchase price paid for products which the ROSS Group has determined, in its sole discretion, are defective. All warranties become void if a product has been subject to misuse, misapplication, improper maintenance, modification or tampering. Products for which warranty protection is sought must be returned to the ROSS Group freight prepaid.

THE WARRANTY EXPRESSED ABOVE IS IN LIEU OF AND EXCLUSIVE OF ALL OTHER WARRANTIES AND THE ROSS GROUP EXPRESSLY DISCLAIMS ALL OTHER WARRANTIES EITHER EXPRESSED OR IMPLIED WITH RESPECT TO MERCHANTABILITY OR FITNESS FOR A PARTICULAR PURPOSE. THE ROSS GROUP MAKES NO WARRANTY WITH RESPECT TO ITS PRODUCTS MEETING THE PROVISIONS OF ANY GOVERNMENTAL OCCUPATIONAL SAFETY AND/OR HEALTH LAWS OR REGULATIONS. IN NO EVENT IS THE ROSS GROUP LIABLE TO PURCHASER, USER, THEIR EMPLOYEES OR OTHERS FOR INCIDENTAL OR CONSEQUENTIAL DAMAGES WHICH MAY RESULT FROM A BREACH OF THE WARRANTY DESCRIBED ABOVE OR THE USE OR MISUSE OF THE PRODUCTS. NO STATEMENT OF ANY REPRESENTATIVE OR EMPLOYEE OF THE ROSS GROUP MAY EXTEND THE LIABILITY OF THE ROSS GROUP AS SET FORTH HEREIN.





AMERICAS

U.S.A.

ROSS CONTROLS

rosscontrols.com

Customer Service

1-800-GET-ROSS (438-1800)

Technical Service

1-888-TEK-ROSS (835-7677)

Canada

ROSS CANADA

rosscanada.com

6077170 CANADA INC.

AN INDEPENDENT REPRESENTATIVE

Brazil

ROSS SOUTH AMERICA Ltda.

rosscontrols.com.br

EUROPE

Germany

ROSS EUROPA GmbH

rosseuropa.com

United Kingdom

ROSS UK Ltd.

+44-1543-671495

sales.uk@rosscontrols.com

rossuk.co.uk

France

ROSS FRANCE SAS

rossfrance.com

ASIA & PACIFIC

Japan

ROSS ASIA K.K.

rossasia.co.jp

India

ROSS CONTROLS INDIA Pvt. Ltd.

rosscontrols.com

China

ROSS CONTROLS (CHINA) Ltd.

rosscontrolschina.com

Full-Service Global Locations

There are ROSS Distributors Throughout the World

To meet your requirements across the globe, ROSS distributors are located throughout the world. Through ROSS or its distributors, guidance is available for the selection of ROSS products, both for those using pneumatic components for the first time and those designing complex systems.

Other literature is available for engineering, maintenance, and service requirements.

If you need products or specifications not shown in this catalog, please visit ROSS' website, contact ROSS or your ROSS distributor. The ROSS Support Team will be happy to assist you in selecting the best product for your application.

For a current list of countries and local distributors, visit ROSS' at rosscontrols.com.